



11 Swallow Court Newtown QLD

4 1 2

Situated in the inner-city booming suburb of Newtown in a quiet suburb pocket and on a peaceful street. A corner block with two street access, this well-loved 4-bedroom family home has plenty of extras that both owner-occupiers and investors will immediately appreciate.

Think vintage charm with a modern twist. With high ceilings and VJ walls throughout, the kitchen offers plenty of bench space and is combined with a sizeable dining room. The living area has a cosy fireplace for the current Winter nights and there is A/C for the Summer days. The four bedrooms are generous in size with polished wood flooring and built-in wardrobes in all but one. The bedrooms are serviced by the main bathroom featuring a shower over a bath. A mudroom for school bags, pet items or extra storage plus a separate toilet is a great advantage.

Outside, there is a fully covered entertainment area leading to the main entrance of the house. The beautifully

Price : \$ 410,000

Land Size : 705 sqm

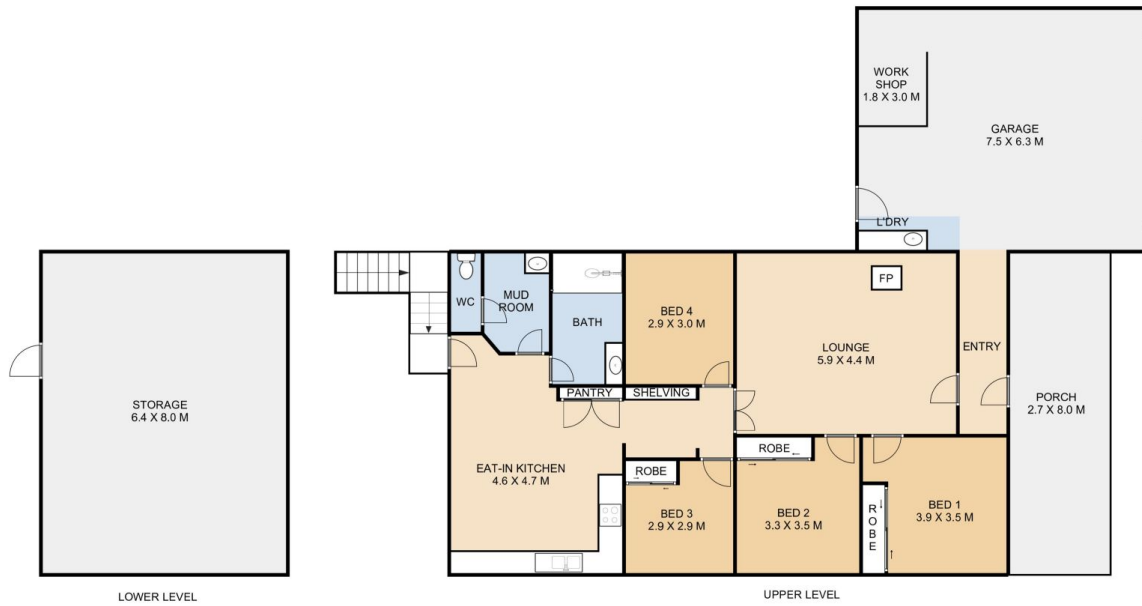
View : <https://www.theroweteam.agency/sale/qld/toowoomba-district/newtown/residential/house/6774626>



Joanne Rowe
0419 664 034



Isabel Rowe
07 4699 0981



The
ROWE TEAM
Agency **11 Swallow Court, Newtown**

This plan is for representational purposes only. All dimensions displayed are approximate and shouldn't be solely relied upon. Floorplan by Statik Illusions.

